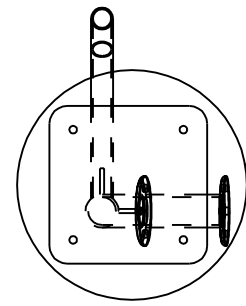
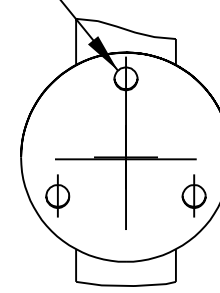


REVISIONS			
LTR	DESCRIPTION	DATE	APPROVED



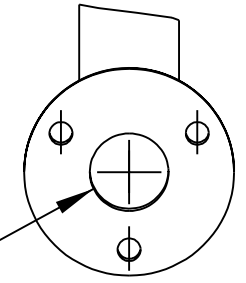
SEE DETAIL B

(3) 7/16 THRU HOLES  
ON  $\phi 3.000$  B.C.

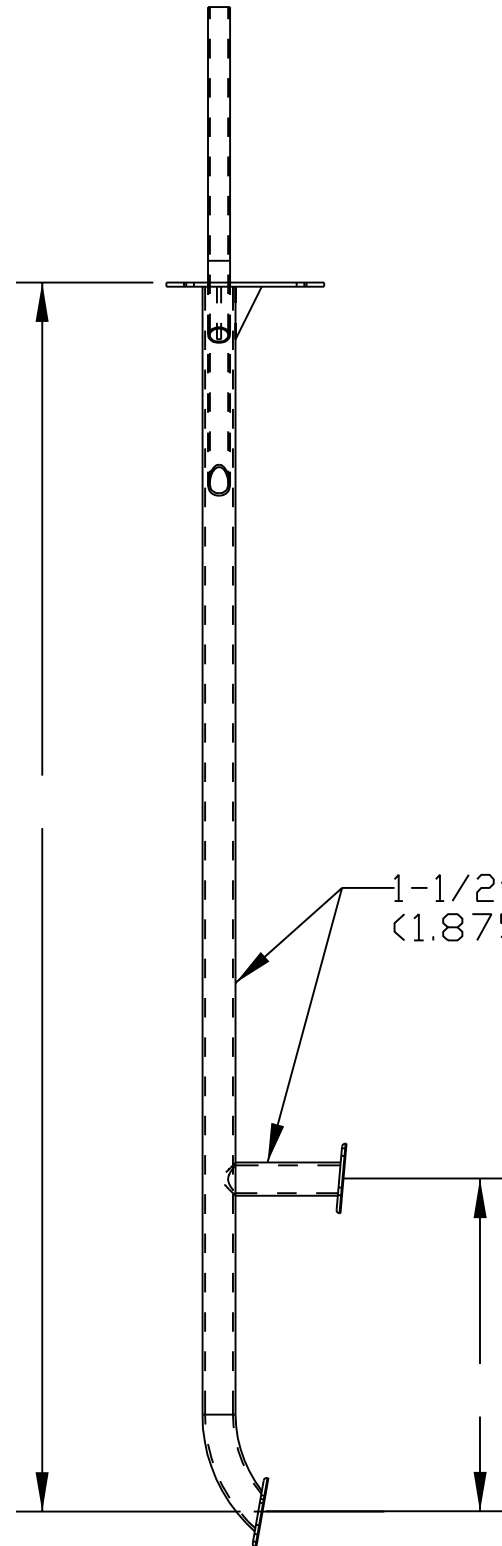


DETAIL C  
FLANGE 2  
SCALE 0.250

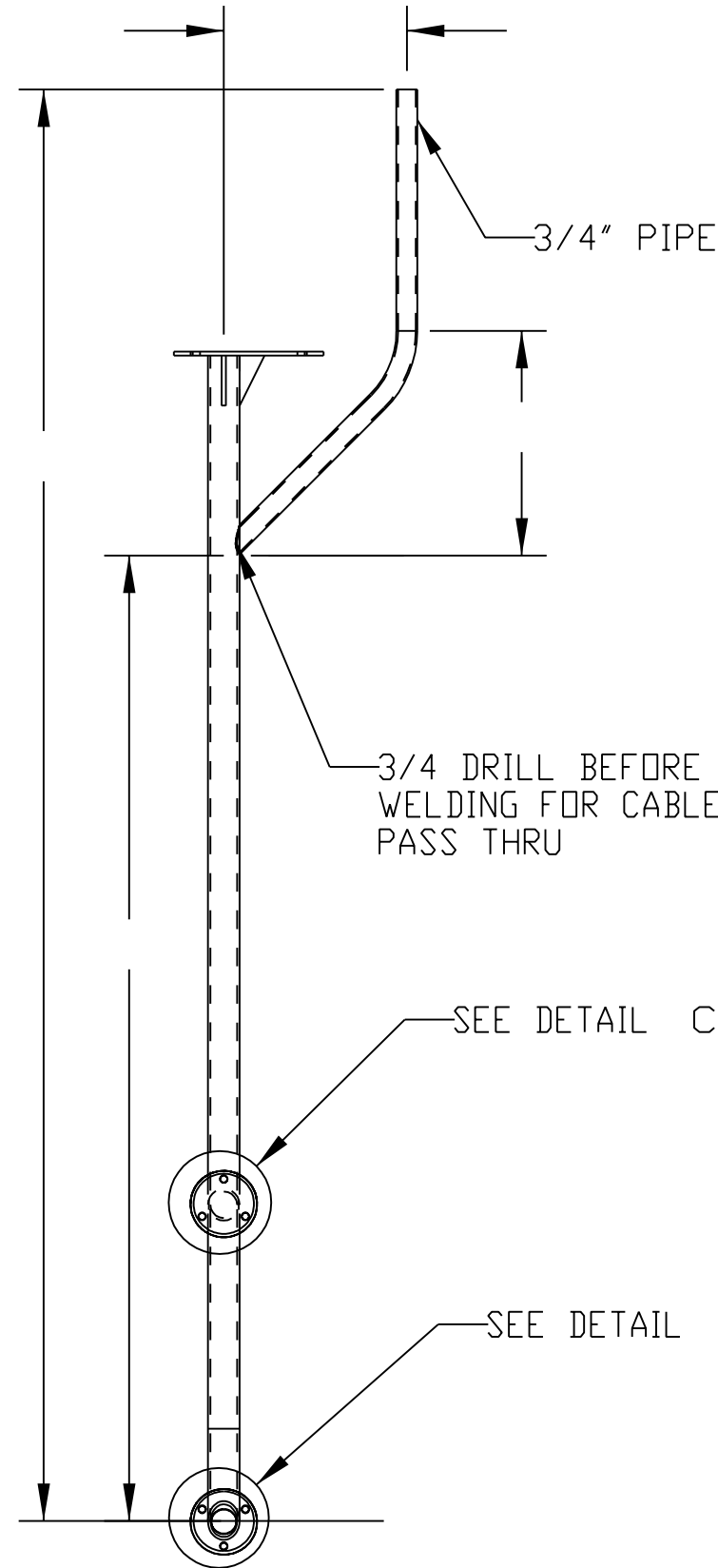
$\phi 1-1/2$  DRILL FOR  
CABLE PASS THRU



DETAIL A  
FLANGE 1  
SCALE 0.250



1-1/2" PIPE  
(1.875 O.D.)



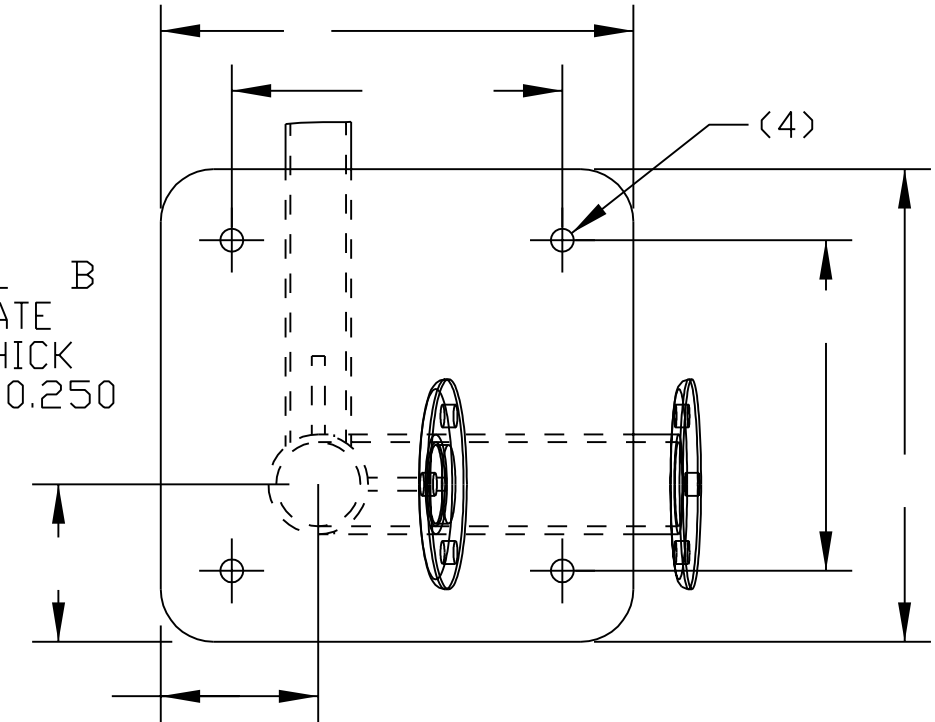
3/4" PIPE

3/4 DRILL BEFORE  
WELDING FOR CABLE  
PASS THRU

SEE DETAIL C

SEE DETAIL A

DETAIL B  
TOP PLATE  
.250 THICK  
SCALE 0.250



TOLERANCES UNLESS OTHERWISE SPECIFIED	
(1) PLACE DEC. $\pm 0.05$	FINISH $\sqrt{125}$
(2) PLACE DEC. $\pm 0.02$	BREAK SHARP EDGES
(3) PLACE DEC. $\pm 0.005$	.02 MAX RADIUS
FRACTIONS $\pm 1/32$	ALL THREADS CLASS 2
ANGLES $\pm 0^{\circ}30'$	
APPROVALS	DATE
DRAWN MD	06/10/02
CHECKED MD	6/10/02
CHECKED	
JOB NO.	CAD

DOLAN OFFSHORE EQUIPMENT BRICK, NEW JERSEY		
TITLE: STARB. RADOME MAST		
SCALE: 0.083	DRAWING NO. RDMAST001	REV. C
MATERIAL: POLISHED ALUMINUM		
COATING: BRITE ANODIZED		